



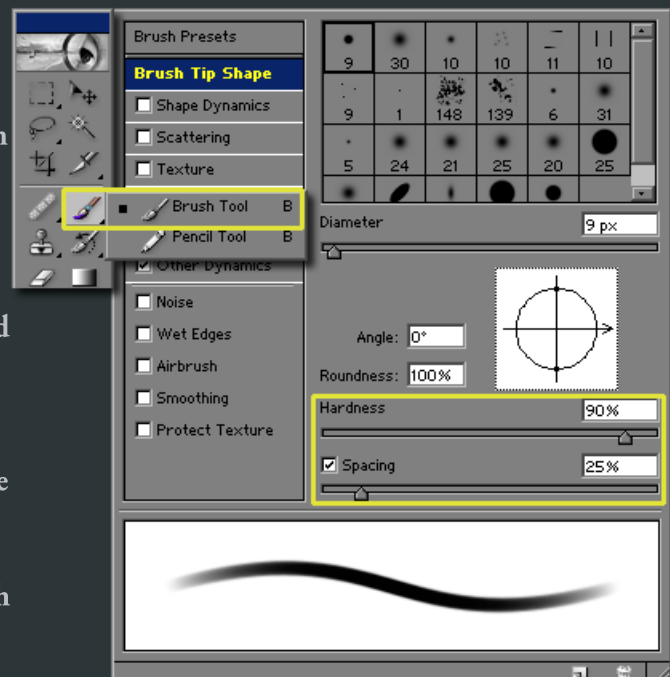
Software used: Photoshop 7
Codecs used: Video - XviD; Audio - Lame MP3
Length: 13:17

Low Poly Character Tutorial, General Delilah: Part 2, Ortho Images

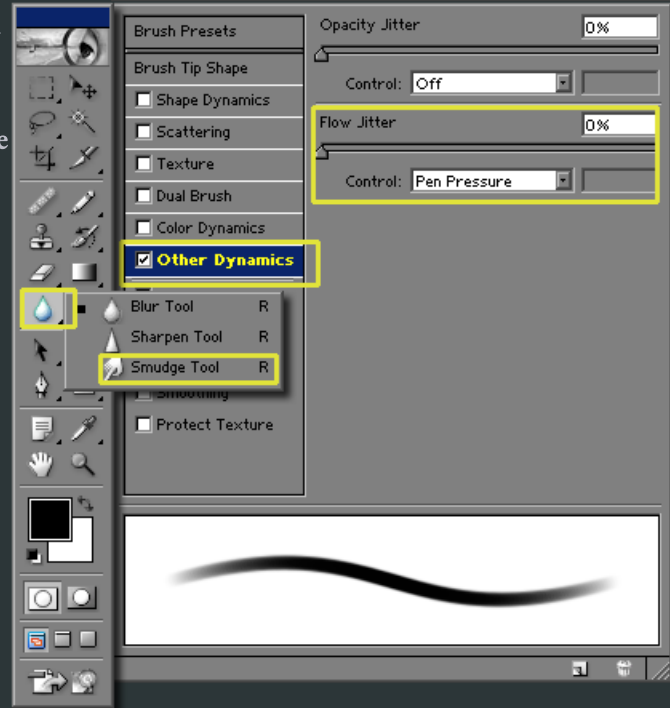
Standard photoshop paintbrush. Hokey = B. Click and hold over the **brush icon** to expand the menu like in the example image to the right. Alternatively you can hit B, then hit Shift+B to cycle to the next tool in the list. For the brush there is only two choices, so it works as a toggle between pencil and brush. **Opacity** and Flow are set to 100%



In the Brush presets, **Hardness** is set to 90%, **spacing** 25%. The only other brush preset is under "**Other dynamics**". There, **Flow** is set to be controlled by the **pen pressure** of the tablet input device (assuming their is one present).



Smudge tool. Hotkey = R. Click and hold over the **blur icon** to expand the menu like in the example image to the right. Alternatively you can hit R, then hit Shift+R to cycle to the next tool in the list. For the blur tool there are three choices, so it cycles between blur, sharpen and smudge. The brush presets for smudge are almost identical to the settings for the paintbrush, except that hardness has been lessened to 0% and Flow Jitter changes it's heading to "Strength" but is located in the same place and is still set to pen pressure.



Layer masks are used extensively and a tutorial can be found on mask usage at, <http://www.poopinmy mouth.com/tutorial/masks.htm>.

Image adjustment options > Brightness/Contrast, Image Size, and Rotate Canvas > Flip Horizontal

Edit options > Free Transform

Filters > Add Noise

have more information available in the photoshop help file.





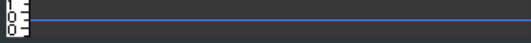
Software used: Photoshop 7
Codecs used: Video - XviD; Audio - Lame MP3
Length: 13:17

Low Poly Character Tutorial, General Delilah: Part 2, Ortho Images

Guides - In photoshop, you can display **rulers** at the top and sides of your image. To toggle the visibility of rulers, hit **ctrl+r**



In addition you can click inside the ruler and drag out **guides**. These are vertical or horizontal blue lines that allow you to line things up, and use to snap things to.



In order to snap to the rulers, you have to make sure **snap** is checked. The shortcut key to toggle snap is **ctrl+shift+;**; If you want to toggle the visibility of guides, hit **ctrl+h**. An added bonus, is that the marquee, or marching ants that show your selection, is considered an **extra**. This means you can hide your selection area so it doesn't disturb your ability to judge the effect you are currently doing.

Cloning - When you select a portion of a layer or a mask, you can clone it by holding the **alt** key when you drag it with the mouse, or move it with the arrow keys. You can hold down **shift** when dragging to constrain the movement to up or down movements only.

